

26

SLIDING SYSTEM

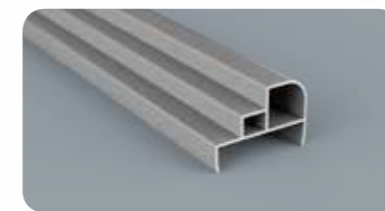
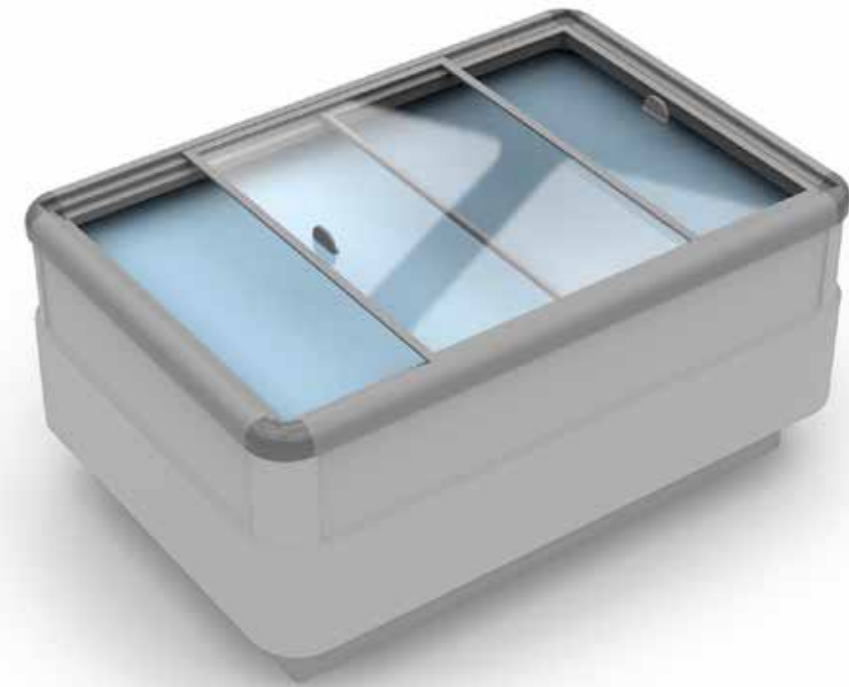
New profiles for covering refrigerated cabinets. With easy installation they can ensure hermetic closure and energy save.

Nuova linea di profili per la copertura di banchi frigo. Di facile installazione garantisce ermeticità e risparmio energetico.

Nouvelle gamme de profilés pour la couverture de meubles frigorifiques. Très facile à installer, elle garantit une fermeture hermétique et une économie d'énergie importantes.

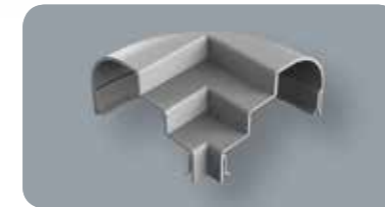
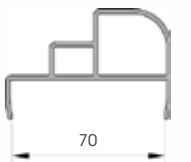


FLAT



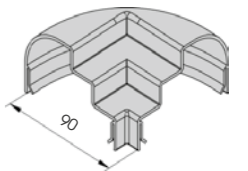
CUB

Length **4.000 mm**
Packing **to be defined**
Colour **B**



FLC

Length **4.000 mm**
Packing **to be defined**
Colour **B**



SSB

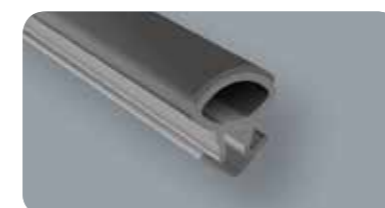
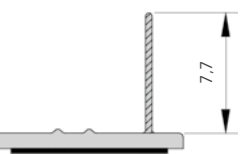
Length **4.000 mm**
Packing **to be defined**
Colour **B**



SSE

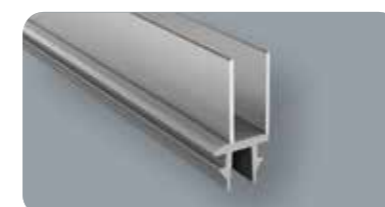
With double-sided tape

Length **4.000 mm**
Packing **to be defined**
Colour **B transparent**



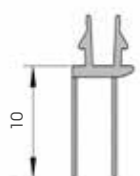
UG

Length **4.000 mm**
Packing **to be defined**
Colour **B transparent**

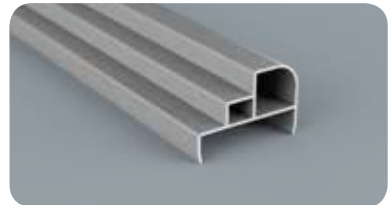
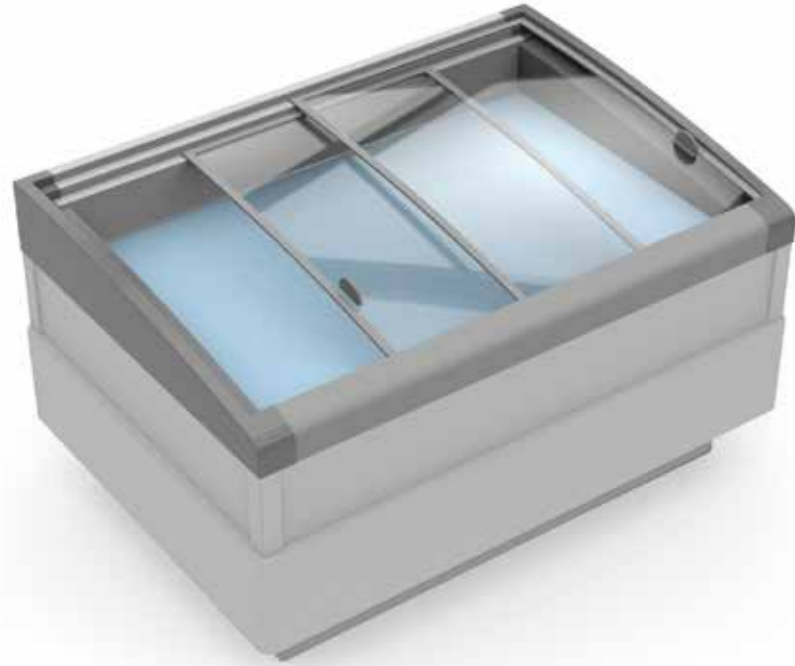


DG

Length **4.000 mm**
Packing **to be defined**
Colour **B transparent**

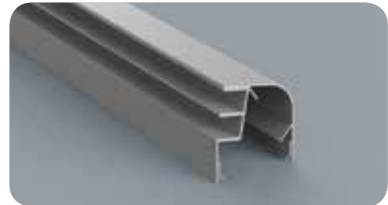
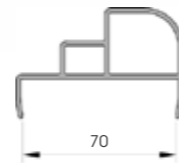


CURVED



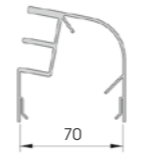
CUB

Length **4.000 mm**
Packing **to be defined**
Colour **B**



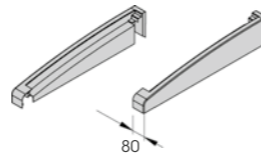
CUF

Length **4.000 mm**
Packing **to be defined**
Colour **B**



CUS SX / DX

Packing **to be defined**
Colour **B**



CUH

Packing **to be defined**
Colour **B**



SSB

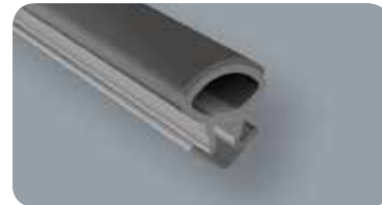
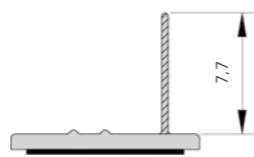
Length **4.000 mm**
Packing **to be defined**
Colour **B**



SSE

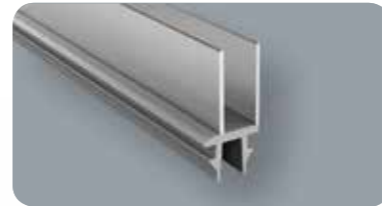
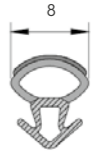
With double-sided tape

Length **4.000 mm**
Packing **to be defined**
Colour **B** transparent



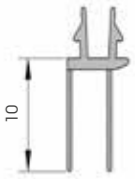
UG

Length **4.000 mm**
Packing **to be defined**
Colour **B** transparent

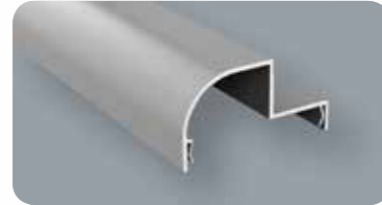


DG

Length **4.000 mm**
Packing **to be defined**
Colour **B** transparent

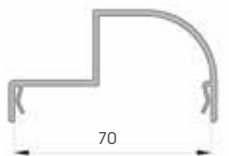


RAIL



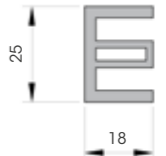
RAP

Length **4.000 mm**
Packing **to be defined**
Colour **K**



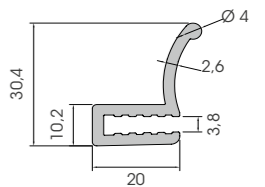
RAEP

Length **4.000 mm**
Packing **to be defined**
Colour **K**



HGF

Length **4.000 mm**
Packing **35 pz / box**
Colour **K**



GF

Length **4.000 mm**
Packing **35 pz / box**
Colour **K**

