

25 WHEEL SYSTEM

Complete system for sliding glass doors of refrigerated displays. Shockproof pvc profiles equipped with accessories to ensure a good insulation and consequently a considerable energy saving. A lower rail is installed to allow the easy sliding opening and closing of doors.

Sistema completo per le porte scorrevoli a vetro degli armadi a muro. Profili realizzati in pvc antiurto completi di accessori che assicurano un buon isolamento e di conseguenza un notevole risparmio energetico. Dotato di sistema di scorrimento che rende agevole l'apertura e la chiusura delle porte.

Système complet pour les portes coulissantes en vitre de vitrines réfrigérées. Profilés en pvc antichoc équipés d'accessoires pour assurer une bonne isolation et donc une économie d'énergie considérable. A rail inférieur est installé pour permettre le coulisement pratique de l'ouverture et de la fermeture des portes.

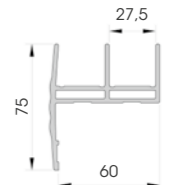


Wheel System



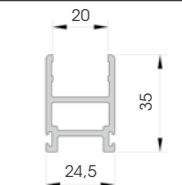
SDF 20

Length **4.000 mm**
Packing **5 pz / box**
Colour **B D**



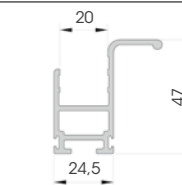
SDW 20

Length **4.000 mm**
Packing **20 pz / box**
Colour **B D**



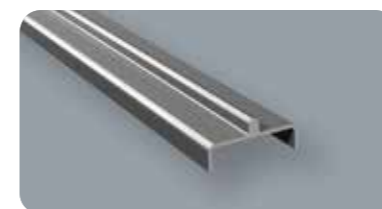
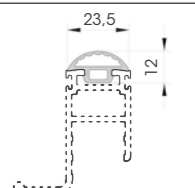
SDH 20

Length **4.000 mm**
Packing **12 pz / box**
Colour **B D**



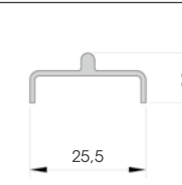
SDHG

Packing **60 mt reel**
Colour **B D**



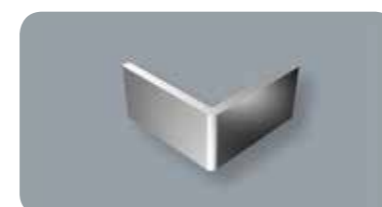
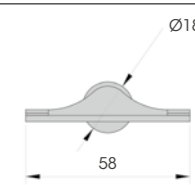
RAIL

Material **aluminium**
Length **3.000 mm**
Packing **24 pz / bundle**



WHEEL

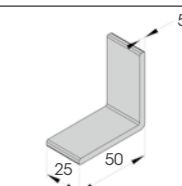
Material **steel**
Packing **100 pz / box**



SQ SDF

To install with SDF

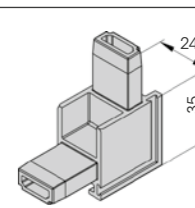
Material **aluminium**
Packing **100 pz / box**



SDW COP

To install with SDW 20 and SDH 20

Packing **100 pz / box**
Colour **B D**



BR 4
BR 8.5

Length **BR 4**
BR 8.5
Packing **BR 4 1 pz / reel L 600 mt**
BR 8.5 1 pz / reel L 225 mt
Packing **D**

